

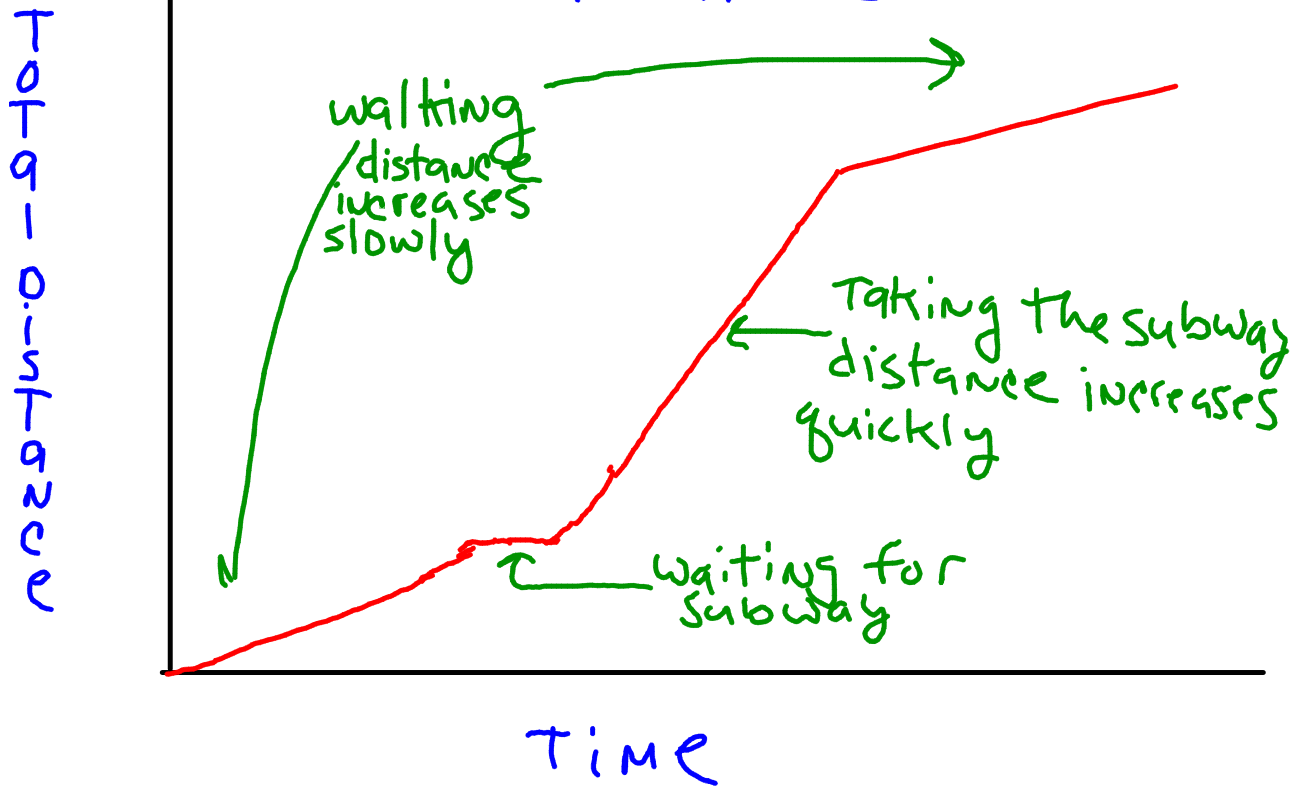
Objective: TSWBAT interpret and sketch graphs from stories and classify data as discrete or continuous.

## Vocabulary

① Continuous data - usually involve a measurement such as temperature, length, or weight

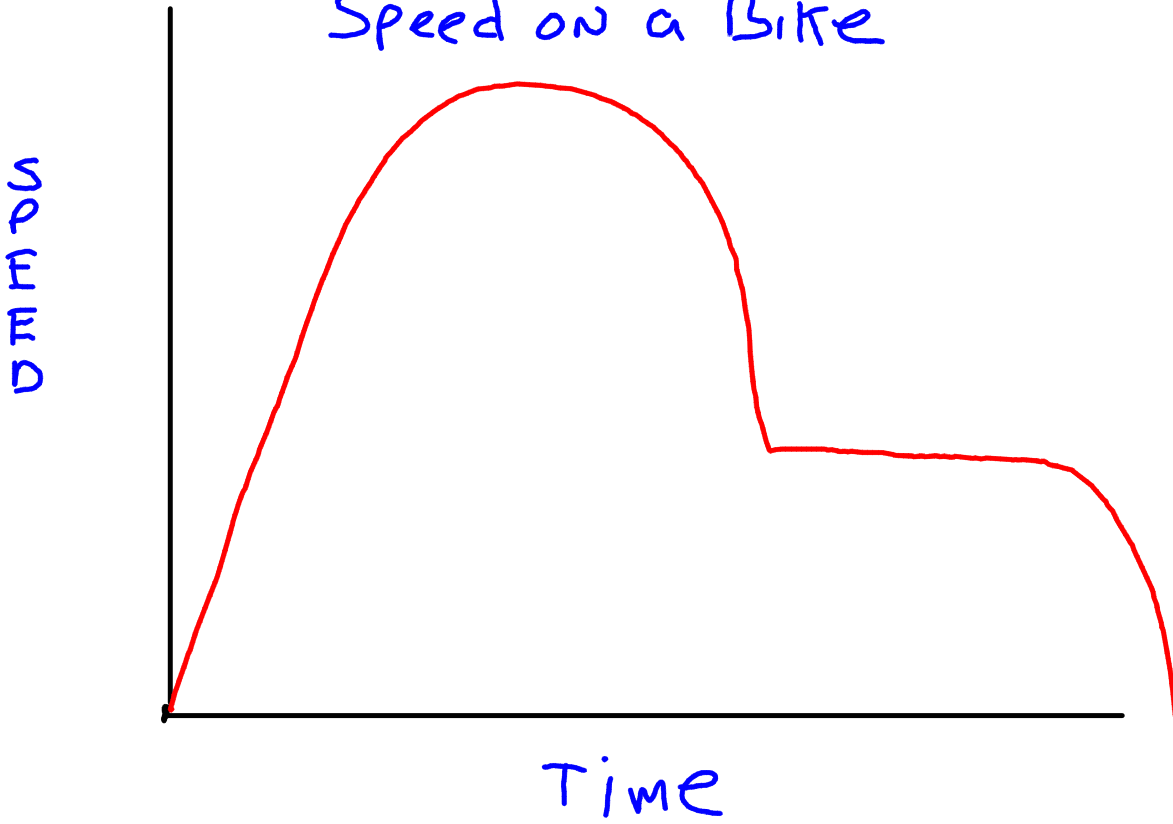
② discrete data - involve a count such as people or objects

## A Commute Home



\*to describe a graph you can label each part

# Speed on a Bike



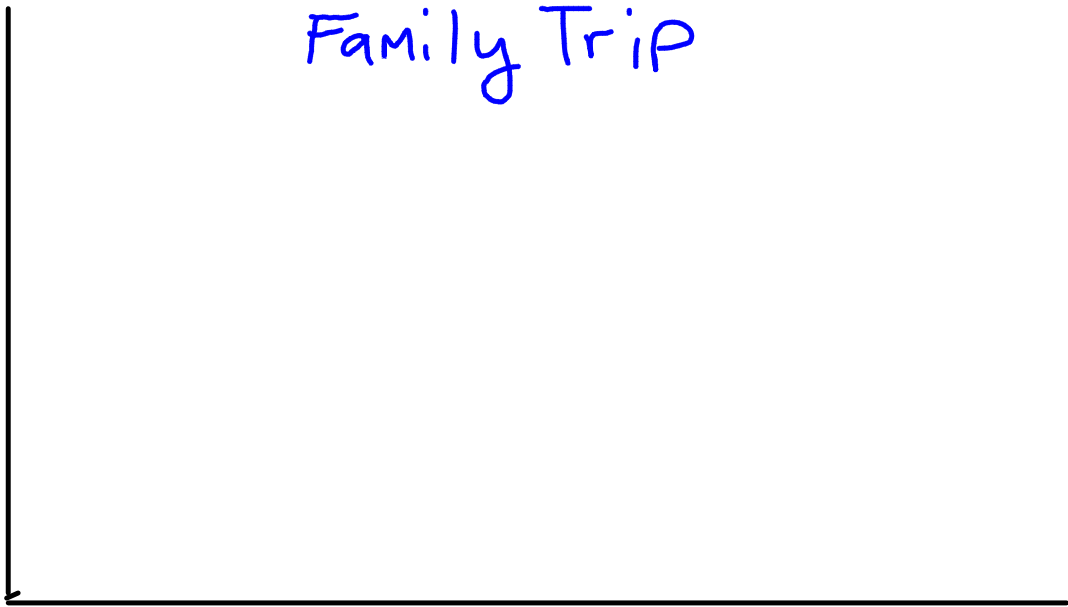
0-4-2014 11:05 AM

## Family Trip

The Shermans are visiting friends several miles from home. On the way they stop to buy juice drinks. After a few hours they return home. Sketch a graph to describe the trip. Label the sections

Time

0-4-2014-2014-0

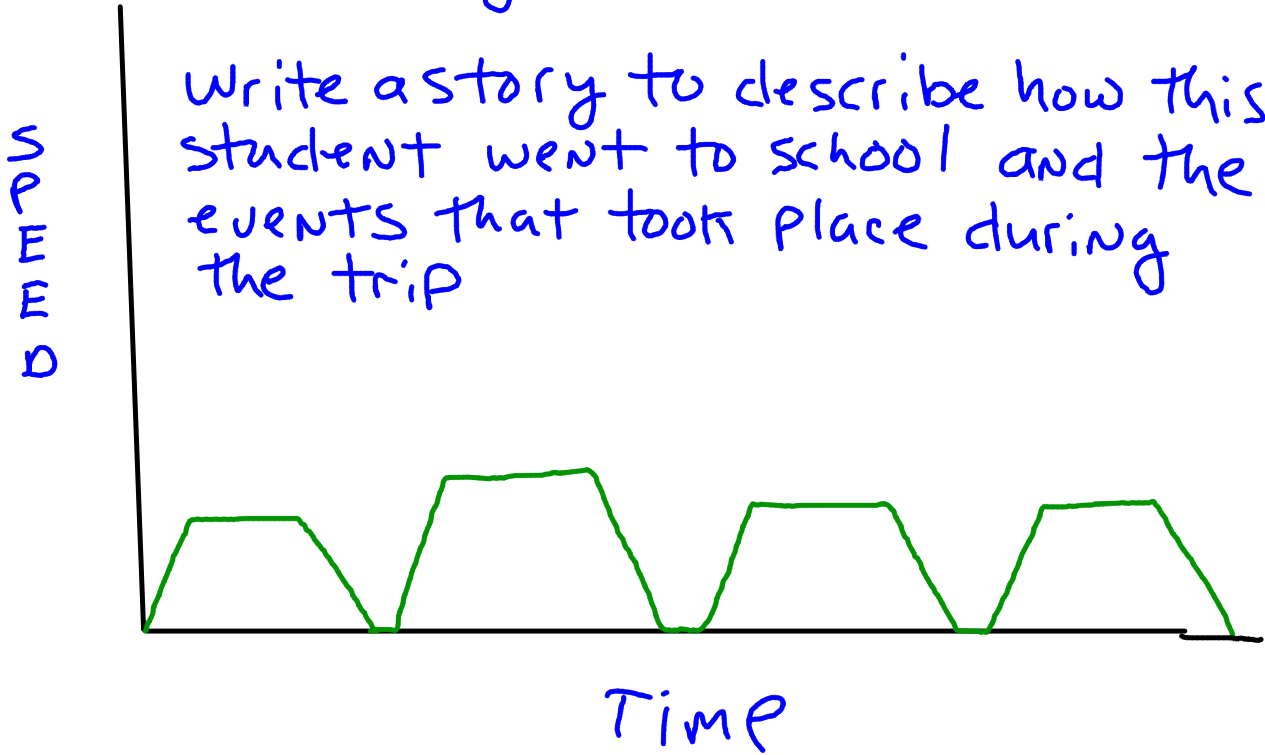


Family Trip

Time

# Daily Trip to School

Write a story to describe how this student went to school and the events that took place during the trip



## Try This

Sketch a graph to describe your height from the ground on a roller coaster ride. Explain the activity in each section of the graph.