

Objective: TSWBAT - identify and graph points  
in the coordinate plane.

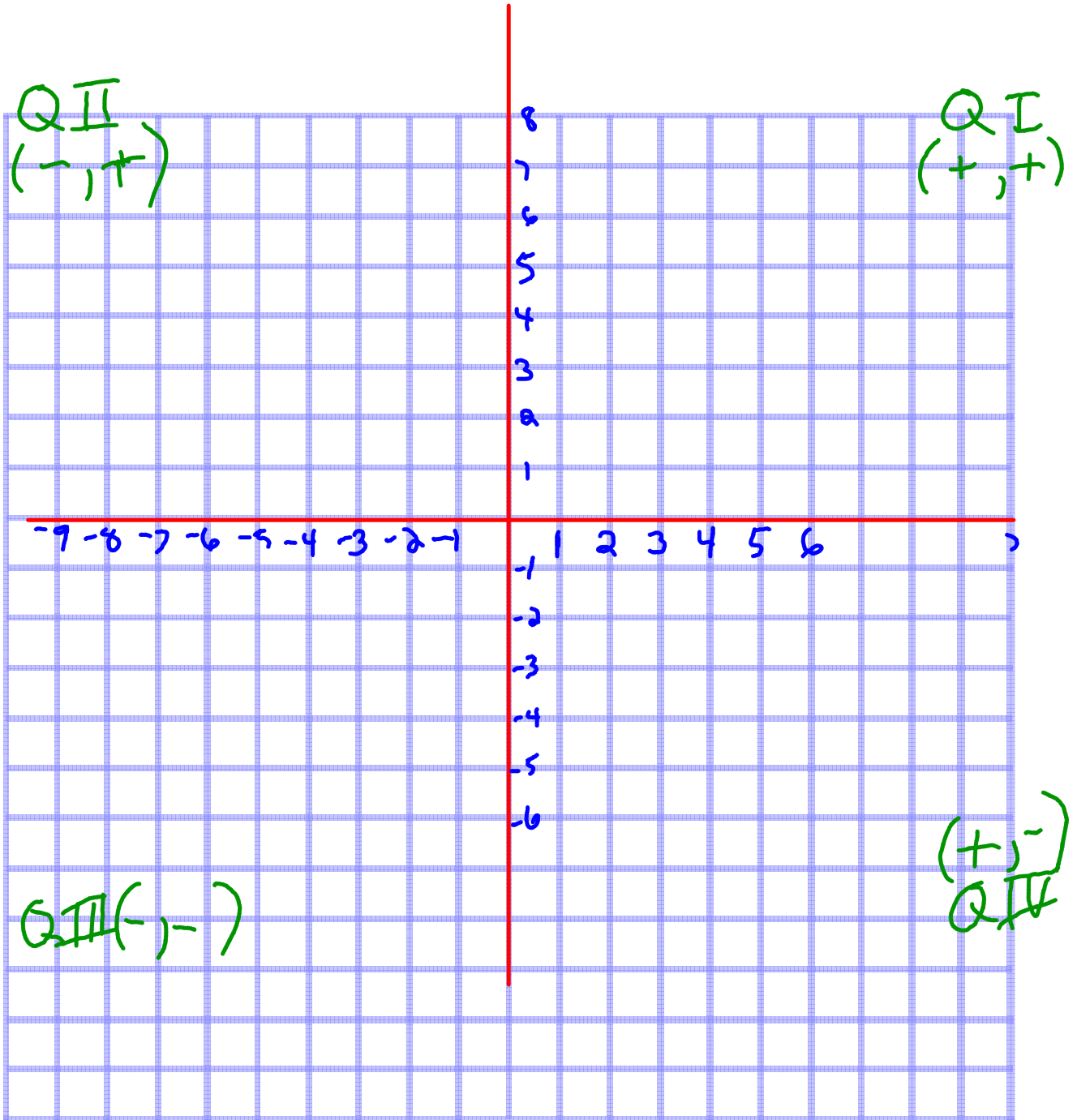
## Vocabulary

- ① coordinate plane - a grid formed by the intersection of two number lines
- ② origin - the intersection of the x-axis and y-axis on a coordinate plane.  $(0,0)$  are the coordinates
- ③ ordered pair - give the coordinates of the location of a point

To locate a point on our coordinate plane we use an **ordered pair**. It is called an ordered pair because the *order* in which the *pair* of numbers is written is important.

Example: **(+3, +1)**

The **first** coordinate, the **x-coordinate**, is +3. This means that the point is 3 units to the right of the origin (0, 0). The **second** coordinate, the **y-coordinate**, is +1. This means that it is 1 unit up from the origin.



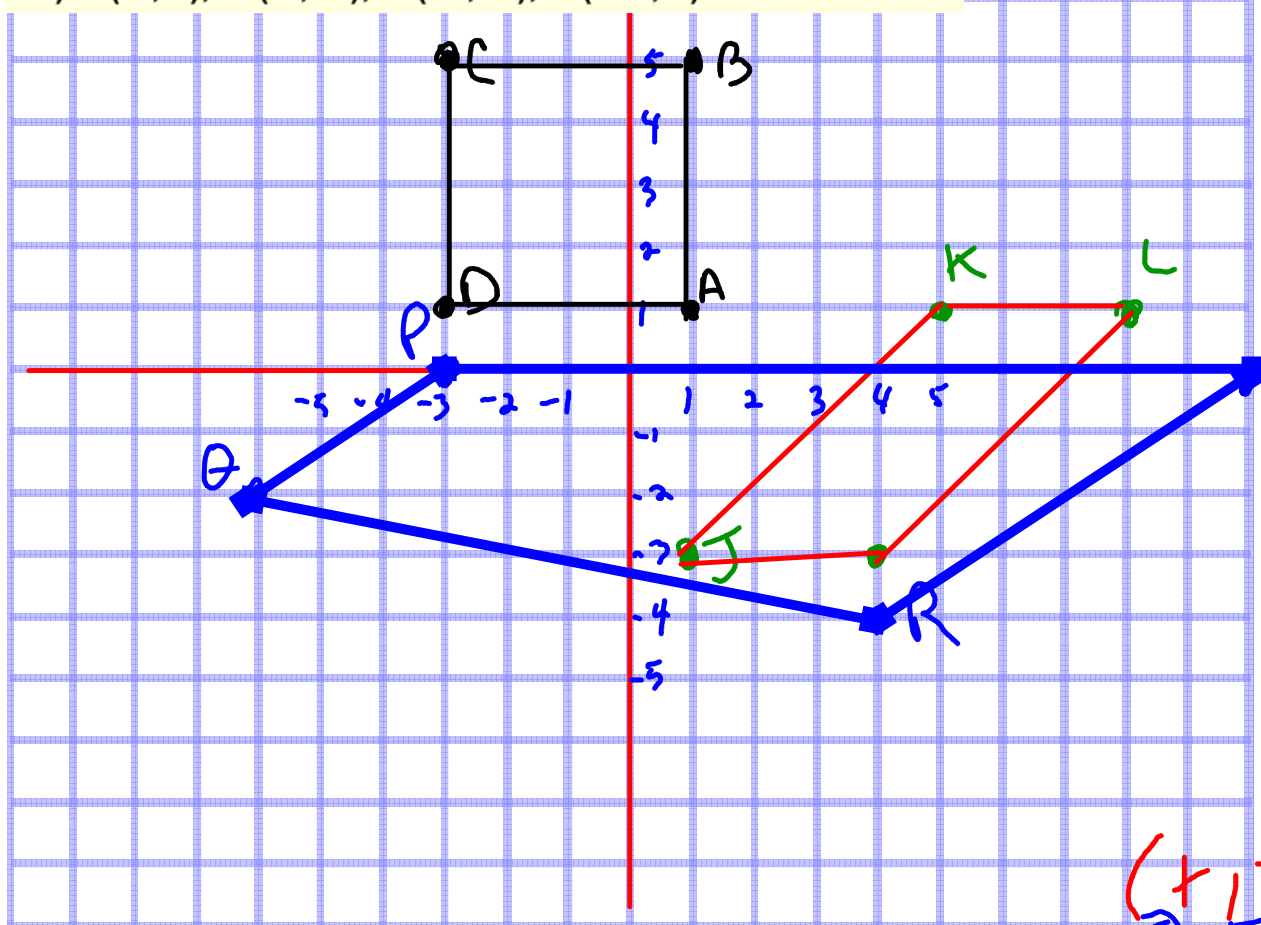
Plot each set of points and join them in order to form a quadrilateral. Identify the quadrilateral.

a) A (+1, +1), B (+1, +5), C(-3, +5), D(-3, +1)

b) J (+1, -3), K (+5, +1), L(+8, +1), M(+4, -3)

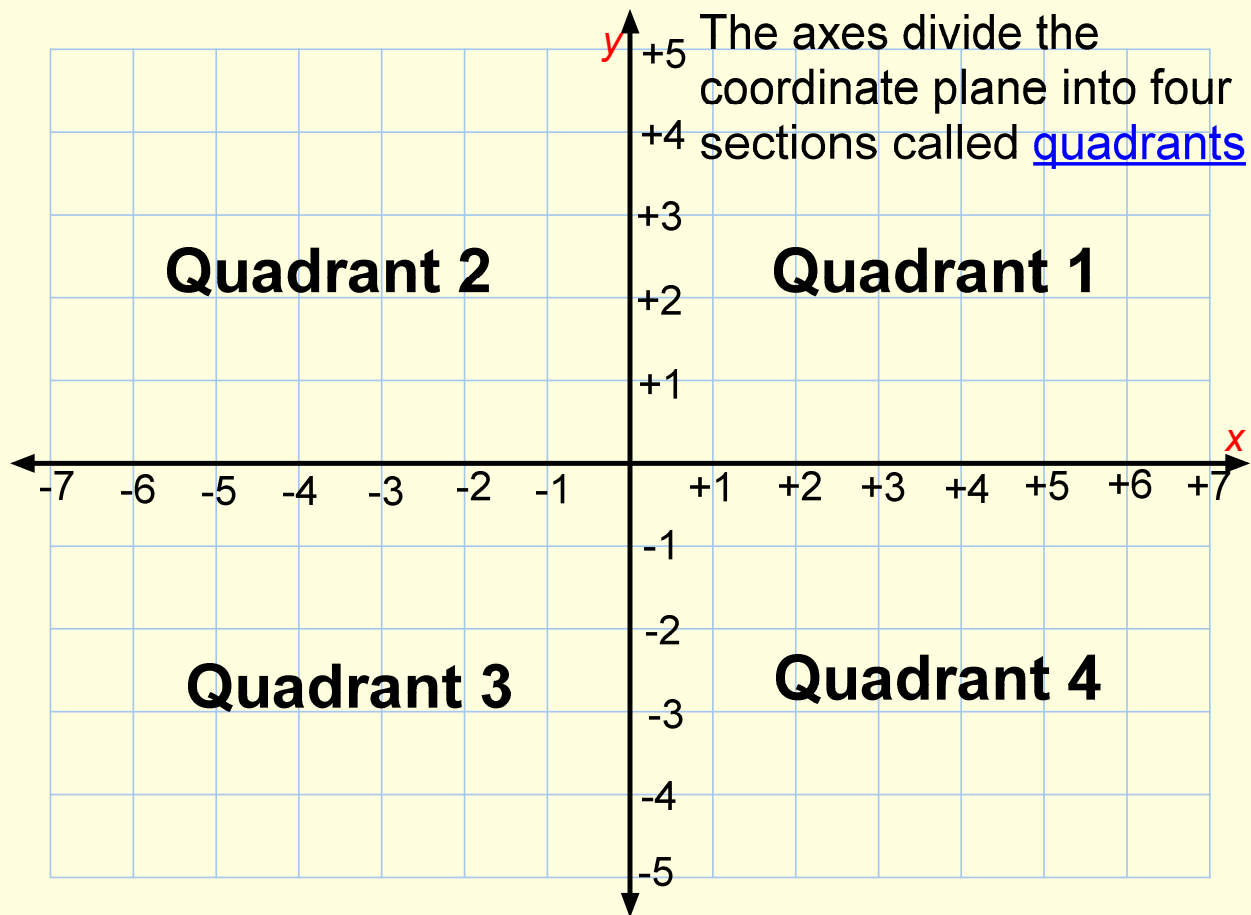
c) P (-3, 0), Q (-6, -2), R (+4, -4), S (+10, 0)

Q I  
(+, +)



Q III  
(-, -)

(+, -)  
Q IV

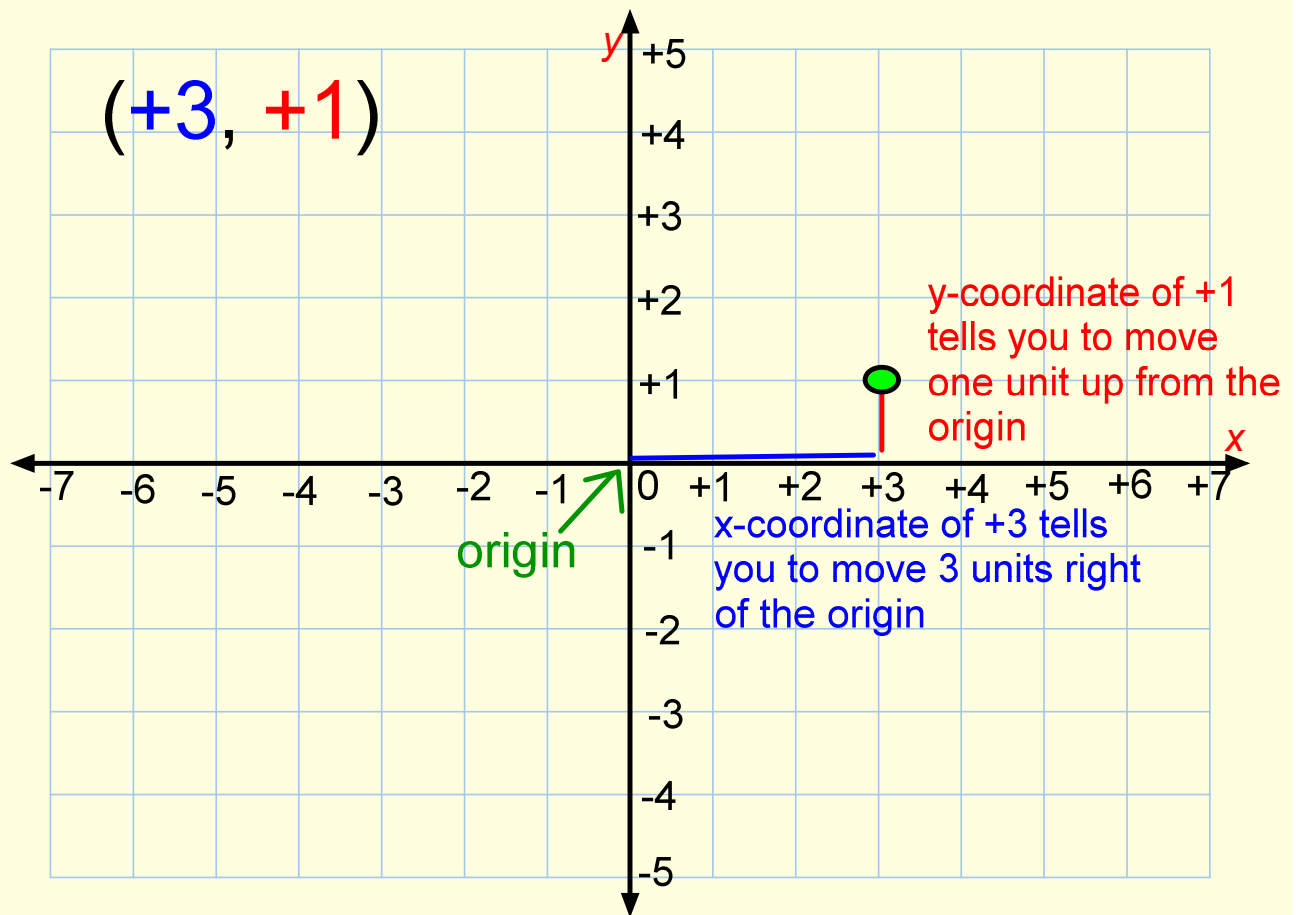


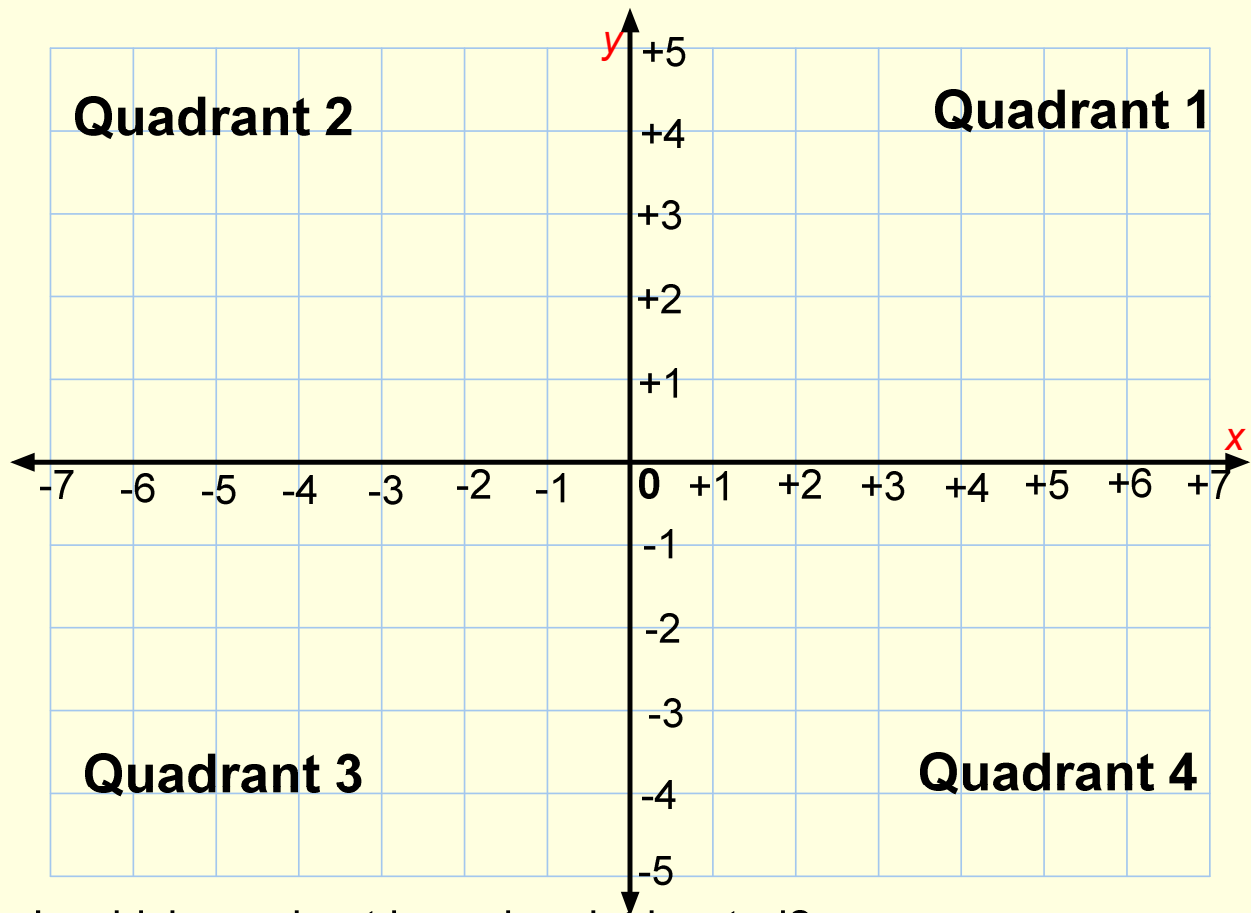
If an x- coordinate is

- + move to the right of the origin
- move to the left of the origin

If a y-coordinate is

- + move up from the origin
- move down from the origin





In which quadrant is each point located?

a) A (+5, +1)  
(+3, -2)

b) B (-3, -5)

c) C

d) D (-4, +2)  
(0, 0)

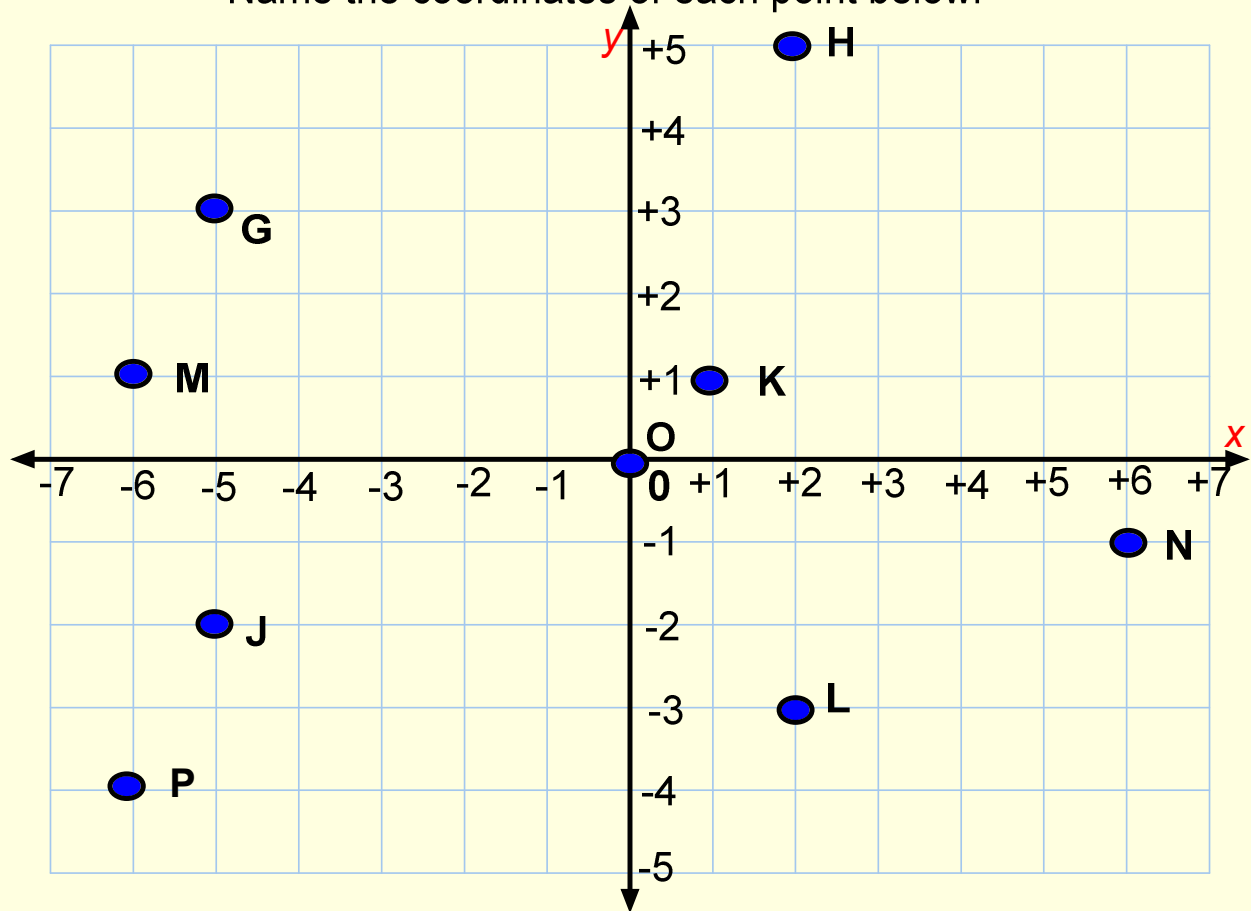
e) E (+2, -2)

f) O

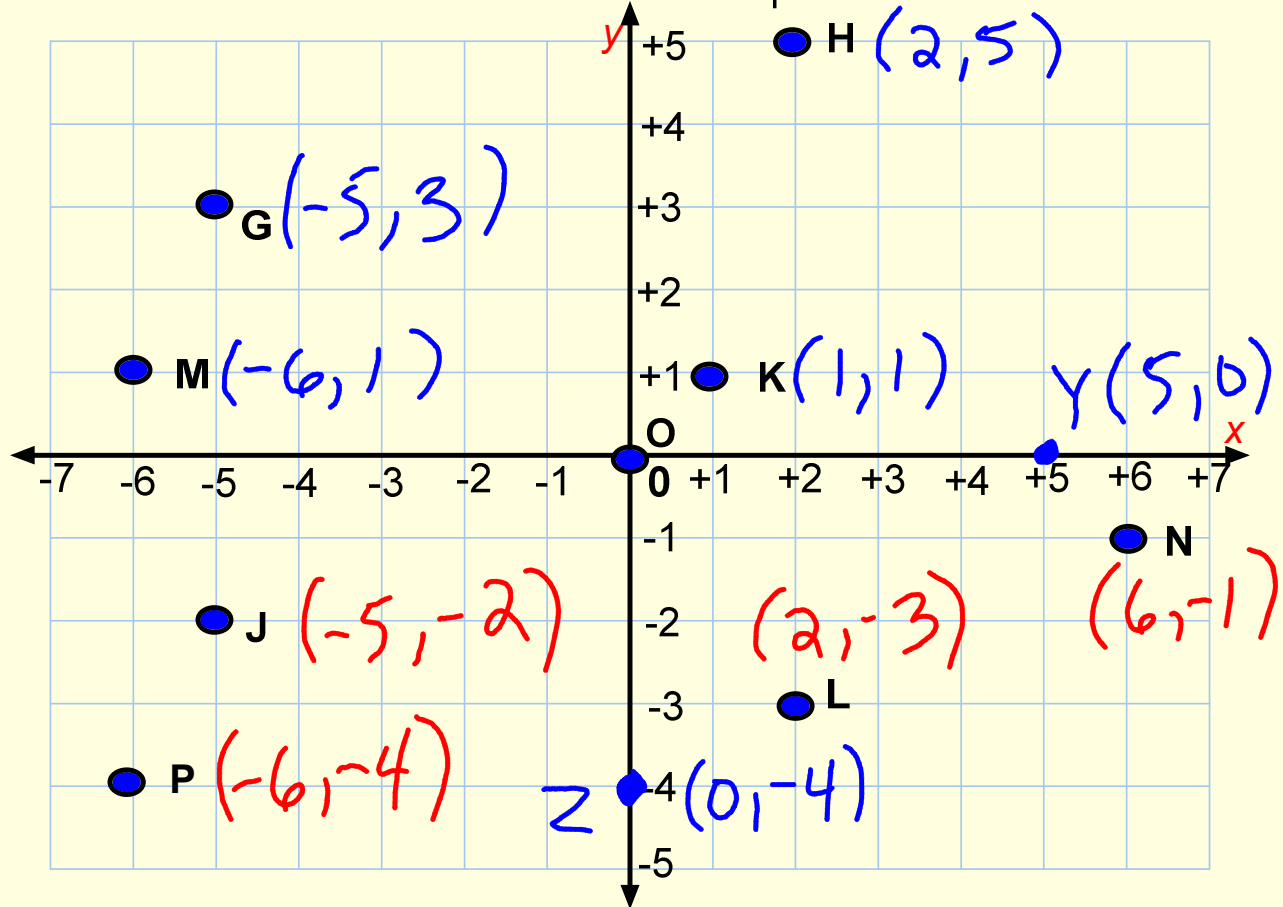
In which quadrants do the coordinates of a point have the same sign?

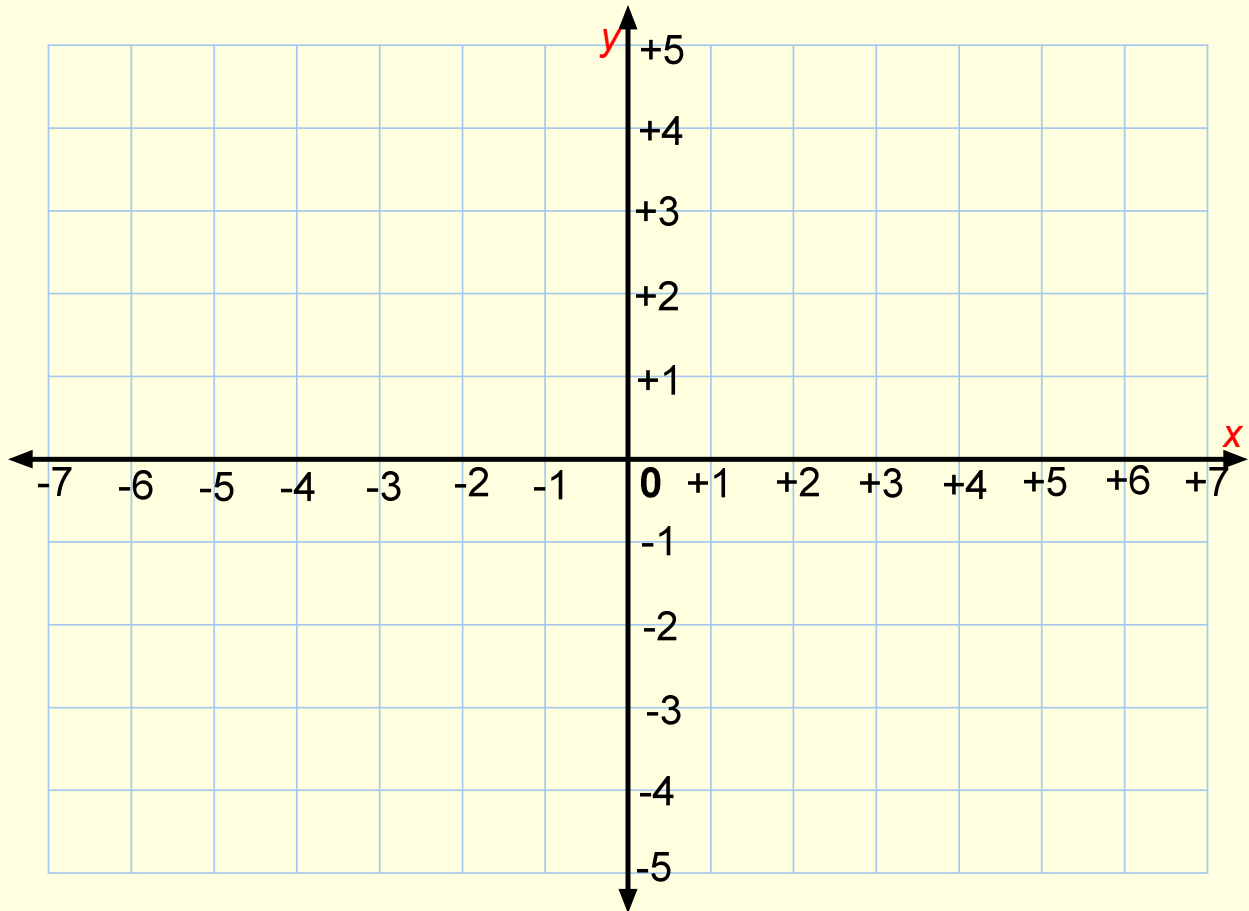
Plot the points onto the above graph.

Name the coordinates of each point below.



Name the coordinates of each point below.





**Plot each set of points and join them in order to form a quadrilateral. Identify the quadrilateral.**

**a) A (+1, +1), B (+1, +5), C(-3, +5), D(-3, +1)**

**b) J (+1, -3), K (+5, +1), L(+8, +1), M(+4, -3)**

**c) P (-3, 0), Q (-6, -2), R (+4, -4), S (+10, 0)**